

[View this email in your Browser](#)



**January 2024**

Para solicitar materiales del proyecto en español, envíe un correo electrónico a [SouthPowersStudy@gmail.com](mailto:SouthPowersStudy@gmail.com).

*Qué: Una reunión pública virtual.*

*Dónde: Visitar el sitio web del proyecto en [www.southpowersstudy.com](http://www.southpowersstudy.com).*

*Cuándo: Desde ahora hasta el 19 de febrero de 2024, para revisar documentos y compartir sugerencias.*

## Study Team Seeks Feedback on South Extension of Powers Boulevard

El Paso County and the Study Team continue to work in collaboration with stakeholders and the community to identify potential alignments for the proposed extension of South Powers Boulevard (Colorado Highway 21) that will maintain regional transportation connectivity.

The planning process developed and evaluated a range of possible corridor alignments to determine how well they addressed the needs of the area. The study process is now moving from alternatives analysis to the phase of finalizing recommendations. Two recommended alignments have been identified and an access control plan is being developed.

### Tell Us What You Think Virtual Public Open House

**What:** A Virtual Public Open House to view the narrowed set of alignment options and provide your feedback.

**Where:** Visit the project website, [www.southpowersstudy.com](http://www.southpowersstudy.com)

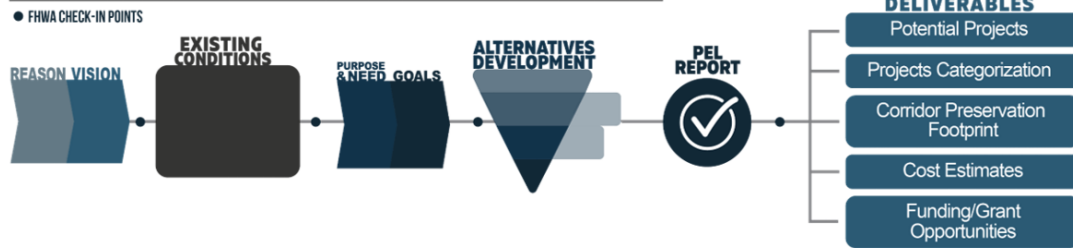
**When:** Now through February 19, 2024

## Existing Conditions Report

The PEL Study completed an [Existing Conditions Report](#) in early 2023. This report documents current regional traffic, operations, and safety data to provide a baseline for identifying needs and potential transportation improvements in the corridor.

The report also documents existing environmental resources to identify critical resources, design constraints, and improvement opportunities. The Existing Conditions Report incorporates input from local agencies, resource agencies and government entities (El Paso County, the Colorado Department of Transportation, Pikes Peak Area Council of Governments (PPACG), Colorado Parks and Wildlife, US Fish and Wildlife Service, etc.).

## PLANNING AND ENVIRONMENTAL LINKAGES STUDY (PEL)

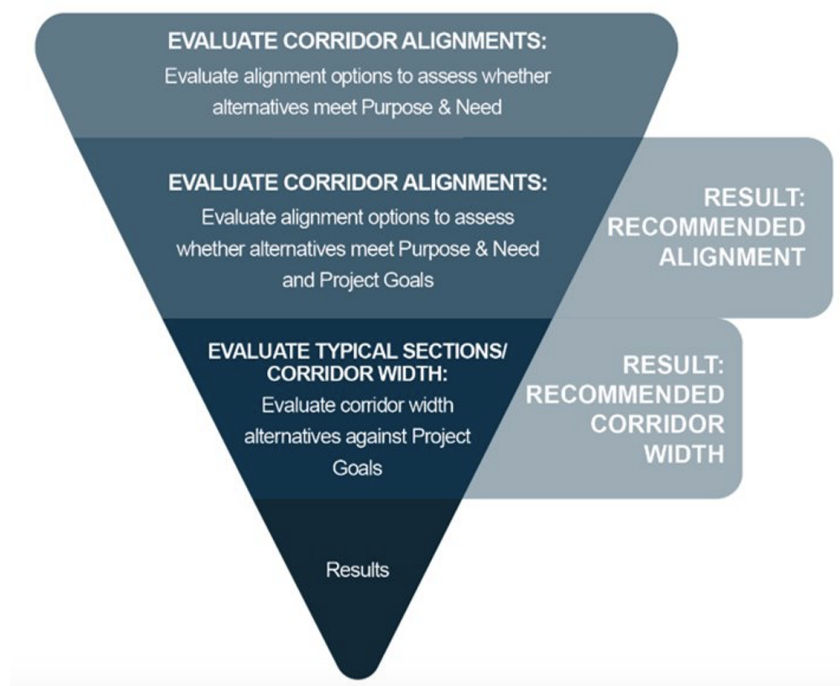


Please visit the [Frequently Asked Questions](#) document on the project website for questions and responses related to the study.

For more details on the Existing Conditions Report data collected, the Purpose & Need selection process and finalized statements, and details on the alternatives analysis process, please visit [SouthPowersStudy.com/project-overview](https://SouthPowersStudy.com/project-overview)

### Results of the Alternatives Analysis Process

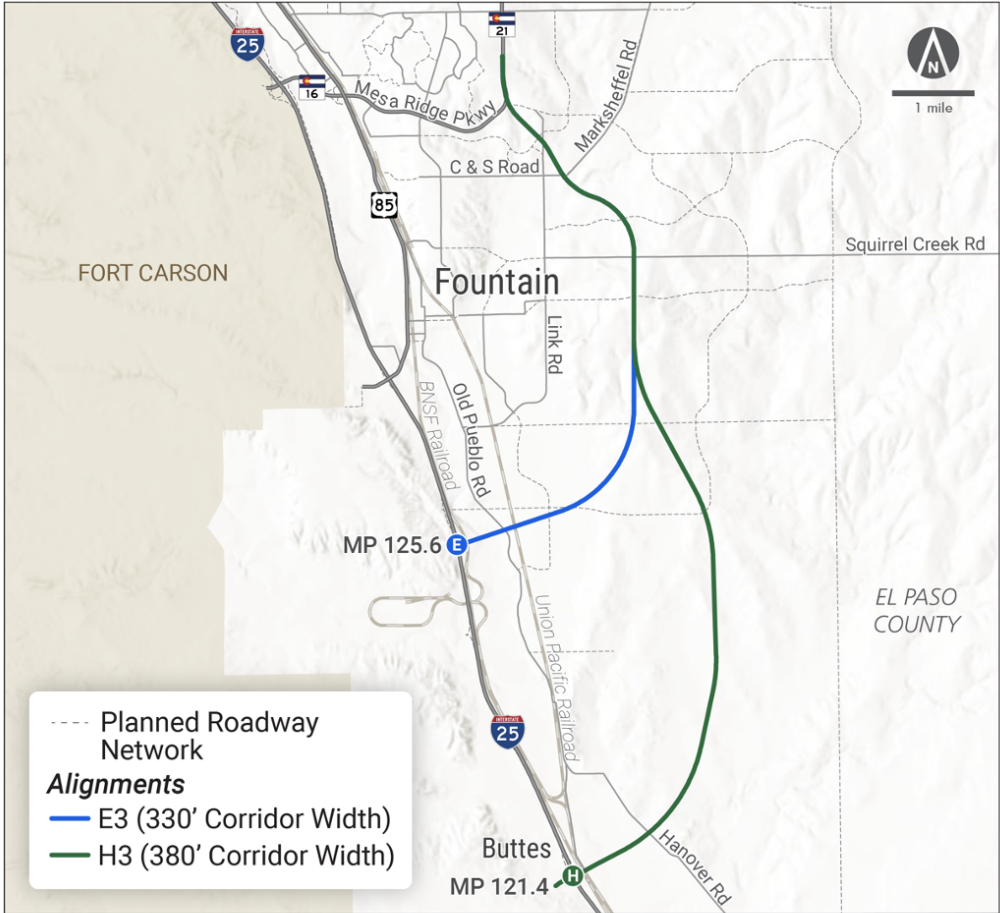
The Study Team used the information collected from the Existing Conditions Report as well as future land use and growth information, and stakeholder input, to develop alternative alignments for the corridor. The Recommended Alternatives were identified through a multi-level, iterative process.



Agency coordination and public involvement played an important role in the Alternatives Development process. Out of the nine alternatives analyzed, the Study Team has narrowed the alignment options down to two recommended alignments; Alignments E3 and H3. These alignments were selected for recommendation due to their ability to meet the Purpose & Need and Goals for the corridor.

The Study Team has reviewed these alignments with local property owners along the proposed alignments during one-on-one and small group meetings. Public comments on the recommended alignments were collected and recorded during these meetings. Additional public comments received during the virtual public

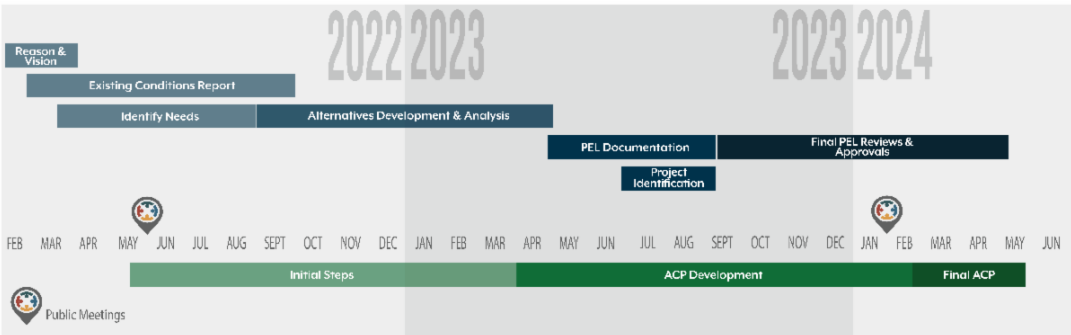
open house will be reviewed and considered. These two alignments may refined as design progresses, also to avoid impacts, where possible.



**South Powers Extension Study – Recommended alignments for Corridor Preservation**

### Next Steps

**Virtual Public Open House:** Please visit the project website to review the narrowed set of alignment options and provide your feedback. Public comments will be accepted through February 19: [www.southpowersstudy.com](http://www.southpowersstudy.com)

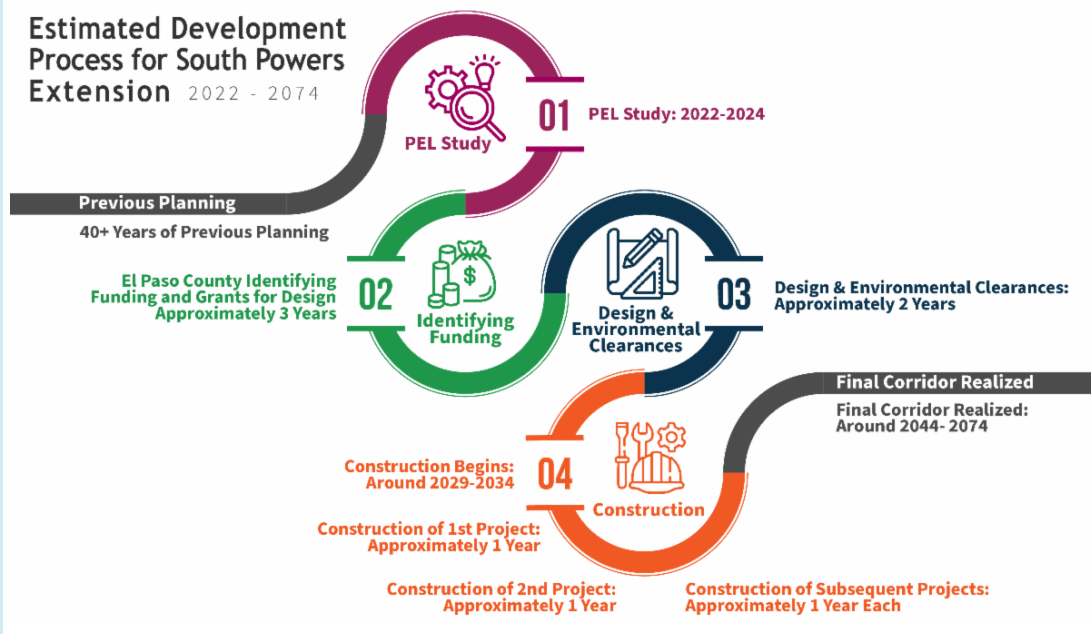


### Estimated Development Timeline for the South Powers Extension

During the stakeholder and property owner meetings, two question were most commonly asked: What is the location of the alignments? When will construction begin/end?

**What is the location of the recommended alignments?** Alignments E3 and H3 have been selected as shown above, but will continued to be refined to minimize impacts as design continues.

**When will construction begin/end?** Since no construction funding has been identified, there is no set timeline for construction. Once funding is identified, the preliminary design will progress along with necessary environmental clearances. General timelines and steps in the process have been identified in the Estimated Development Process Graphic below.



## Project Partners



**COLORADO**  
Department of Transportation



Pikes Peak Area  
Council of Governments  
Communities Working Together



U.S. Department of Transportation  
Federal Highway Administration

## How can I stay Involved?

- To find out more information and review our previous newsletters, visit, <https://www.SouthPowersStudy.com>
- To be included in our enewsletter distribution, sign up by sending an email to: [SouthPowersStudy@gmail.com](mailto:SouthPowersStudy@gmail.com)

**MANTÉNGASE INFORMADO:** Para recibir boletines electrónicos del proyecto, envíe un mensaje a [SouthPowersStudy@gmail.com](mailto:SouthPowersStudy@gmail.com) y será agregado a nuestra lista de contactos.

**Note:** *If you wish to no longer receive this specific project enewsletter but want to continue receiving other project communications that you previously expressed interest in, please hit "reply" to this email and key in the message "REMOVE." Thank you.*

El Paso County, Department of Public Works | 3275 Akers Drive, COLORADO SPRINGS, CO 80922

[Unsubscribe {recipient's email}](#).

[Update Profile](#) | [Constant Contact Data Notice](#)

Sent by [lisa@bachmanpr.com](mailto:lisa@bachmanpr.com) powered by



Try email marketing for free today!