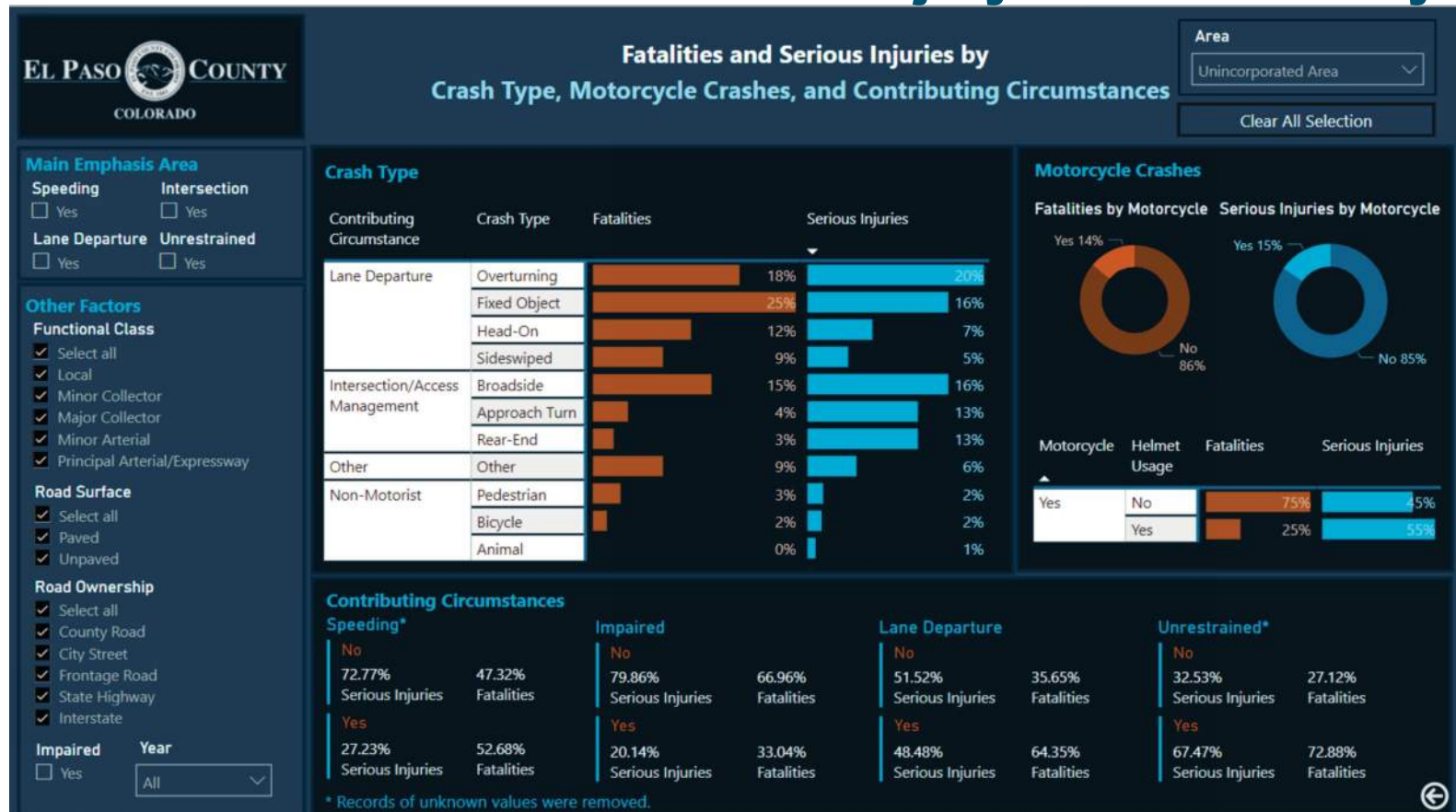


2015-2019 General Trends



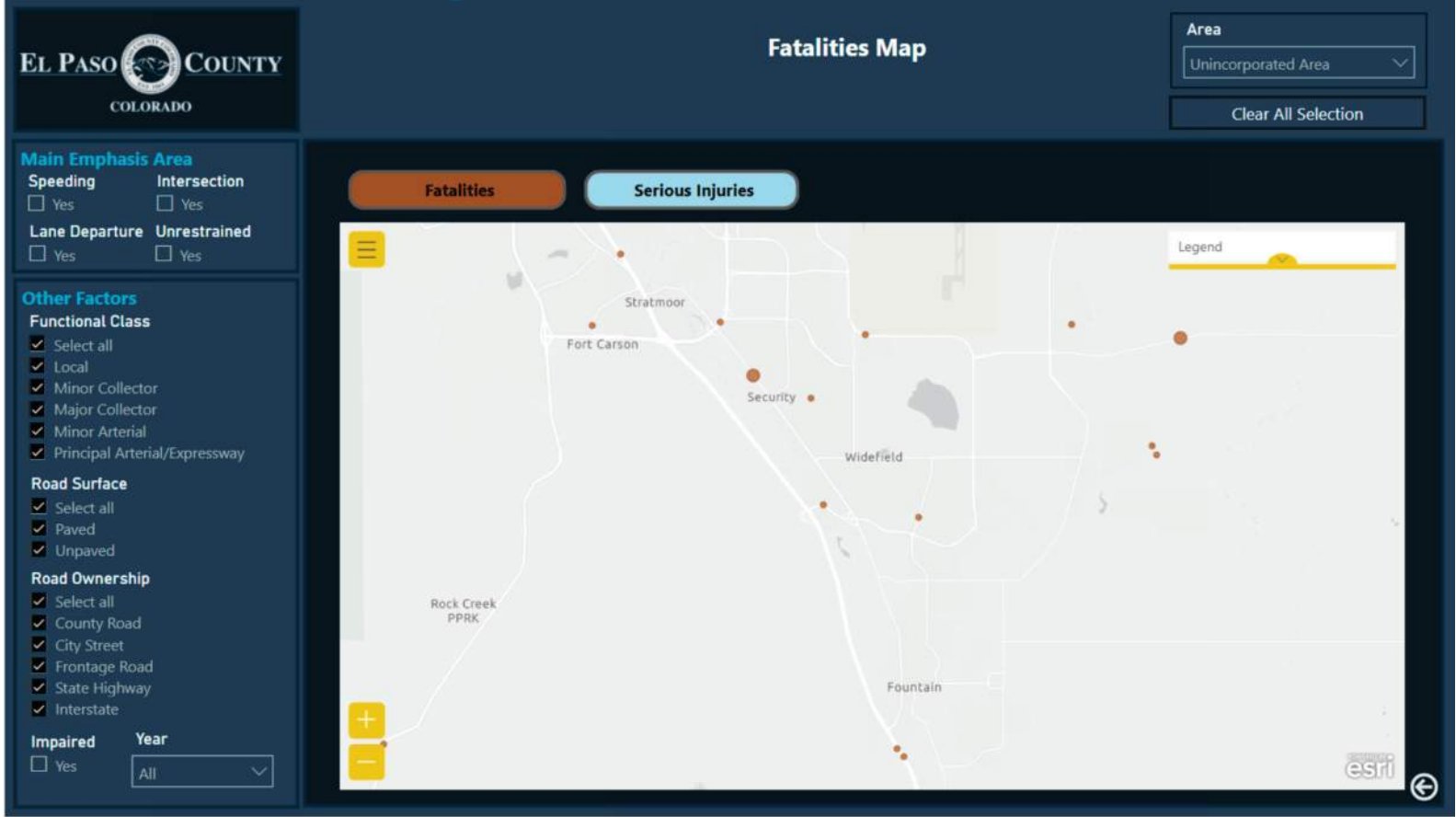
2015-2019 Fatalities and Serious Injury Crash Summary



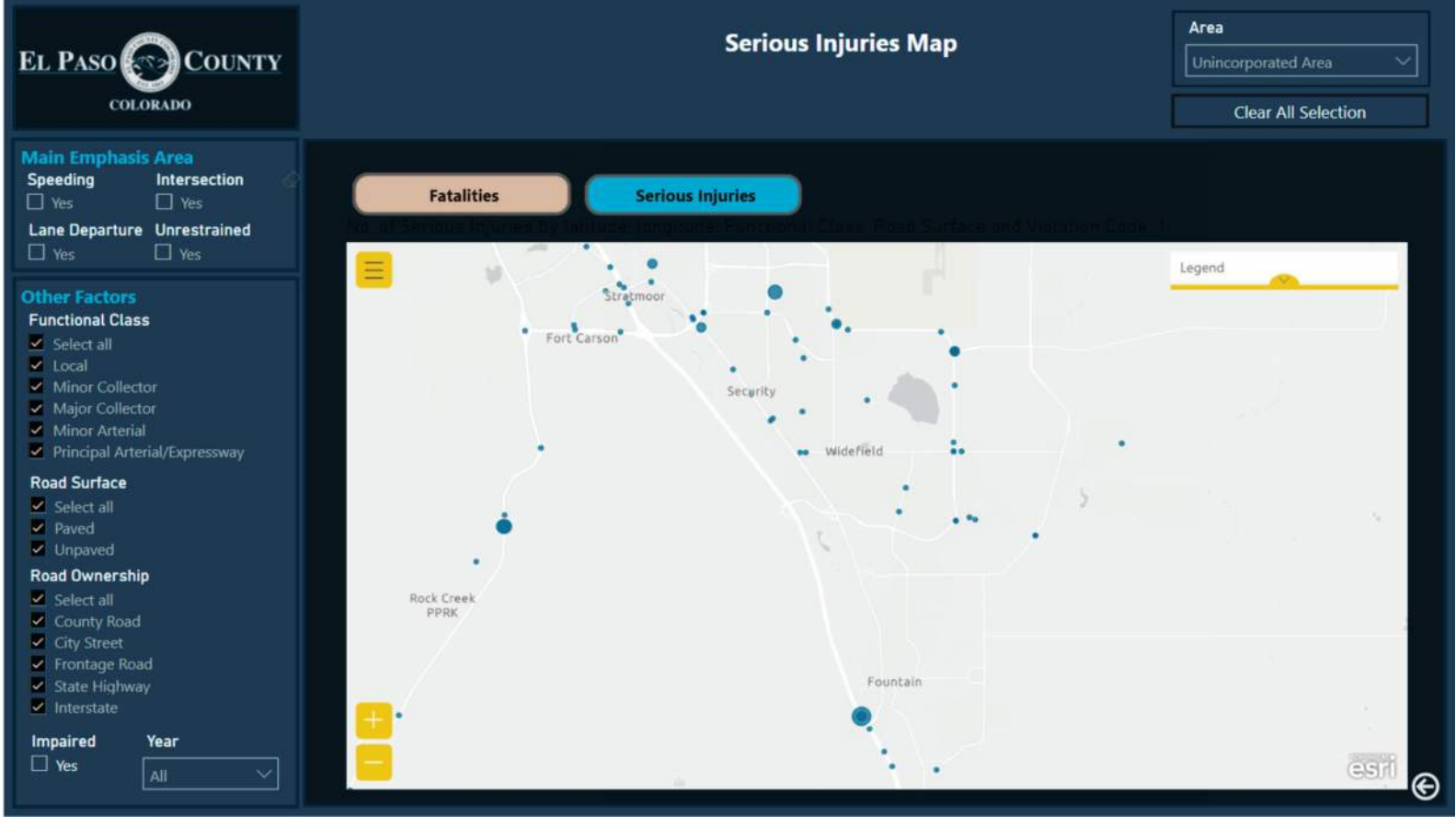
2015-2019 Crash Summary



2015-2019 Fatality Crash Locations



2015-2019 Serious Injury Crash Locations



2015-2019 Crash Locations

Station 6-B1

El Paso County Road Safety Plan

El Paso County recently completed a countywide Road Safety Plan. During the Study that produced the Road Safety Plan, the County developed a website platform to share the five-year El Paso County crash experience database and analysis for 2015-2019 and facilitate public comment on safety issues.

You can access the website at: [El Paso County Road Safety Plan](#) or go directly to the comment map and form at: [El Paso County Road Safety Plan Leave comments](#)

2015-2019 General Crash Trends

The 2015-2019 crash data reviewed for the Road Safety Plan showed a steady increase in the number of serious injury crashes between 2015 and 2018, with a drop in 2019 that may be attributable to reduced travel with COVID-19 shutdowns. A steady decline in fatalities beginning in 2017 stands out as a more stable trend.

More detailed breakdowns of the crash data provide a view of the contributing factors to fatalities and serious injury crashes. This data is broken down in the Road Safety Plan dashboard tool for motorcycle and motorized vehicle-involved crashes.

Station 6-B

2015-2019 Fatality and Serious Injury Crash Locations

The El Paso County Road Safety Plan dashboard tool also includes mapped data for fatality, and serious injury crashes that occurred during the five years between 2015 and 2019.

The mapped data can be accessed at: [El Paso County Unincorporated Area Safety Performance Dashboard](#)

Circular location indicators are sized to represent the number of crashes at specific locations. The number of crashes at this location and roadway details can be viewed by clicking on the indicators. Separate maps are provided for fatality crash and serious injury crash categories²