

[View this email in your Browser](#)



**April 1, 2024**

**MANTÉNGASE INFORMADO:** Para recibir boletines electrónicos del proyecto, envíe un mensaje a [SouthPowersStudy@gmail.com](mailto:SouthPowersStudy@gmail.com) y será agregado a nuestra lista de contactos.

## Upcoming Presentations on South Powers Extension Study Recommended Alignments

The South Powers Extension Planning and Environmental Linkages Study Team will present the recommended corridor alignments resulting from the Alternatives Analysis Process during the meetings noted below.

### **Fountain City Council Meeting:**

6 p.m., Tues., April 9

City of Fountain, City Hall, 116 South Main St., Fountain Colorado 80817

Agenda will be at this link once

available: [https://www.fountaincolorado.org/government/city\\_departments\\_divisions/city\\_clerk/council\\_agendas\\_and\\_recordings](https://www.fountaincolorado.org/government/city_departments_divisions/city_clerk/council_agendas_and_recordings)

The following meetings will all be held at the Pikes Peak Area Council of Governments (PPACG) Office, 14 S. Chestnut, Colorado Springs 80905. Enter at PPACG Lower Level Conference Room off parking lot in back of the building.

### **Pikes Peak Rural Transportation Authority, Citizens Advisory Committee:**

**1:30 p.m., Wed., April 3**

Link to agenda, meeting materials and Zoom info:

[http://pprta.com/meeting\\_materials/pprta-citizen-advisory-committee-4-3-24-meeting-materials/](http://pprta.com/meeting_materials/pprta-citizen-advisory-committee-4-3-24-meeting-materials/)

### **Pikes Peak Rural Transportation Authority, Board:**

1:30 p.m., Wed., April 10

Agenda will be at this link once available: <http://pprta.com/library/>

### **Pikes Peak Area Council of Governments Board:**

9 a.m., Wed., April 10

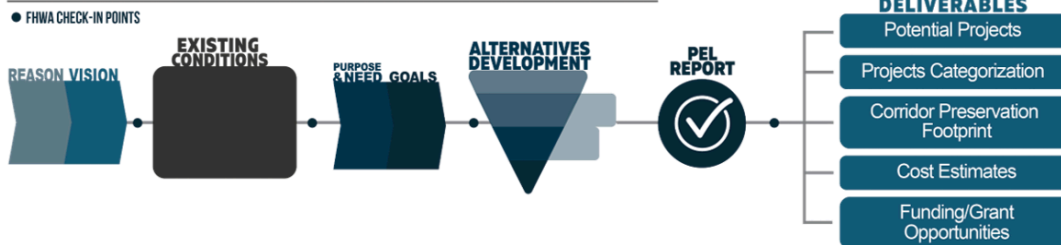
Agenda will be at this link once available: <https://www.ppacg.org/meeting-calendar/>

## Existing Conditions Report

The PEL Study completed an [Existing Conditions Report](#) in early 2023. This report documents current regional traffic, operations, and safety data to provide a baseline for identifying needs and potential transportation improvements in the corridor.

The report also documents existing environmental resources to identify critical resources, design constraints, and improvement opportunities. The Existing Conditions Report incorporates input from local agencies, resource agencies and government entities (El Paso County, the Colorado Department of Transportation, Pikes Peak Area Council of Governments (PPACG), Colorado Parks and Wildlife, US Fish and Wildlife Service, etc.).

#### PLANNING AND ENVIRONMENTAL LINKAGES STUDY (PEL)

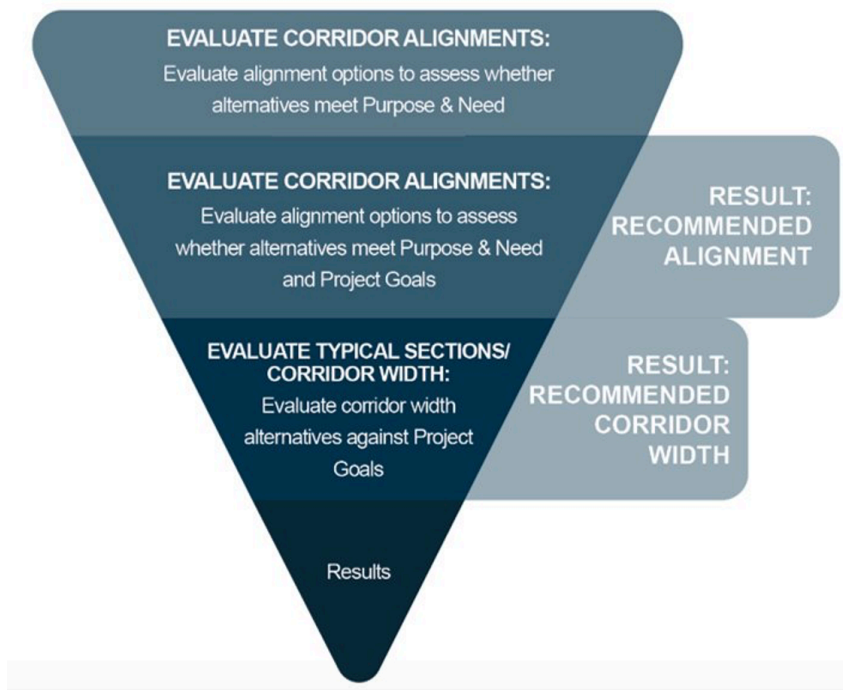


Please visit the [Frequently Asked Questions](#) document on the project website for questions and responses related to the study.

For more details on the Existing Conditions Report data collected, the Purpose & Need selection process and finalized statements, and details on the alternatives analysis process, please visit [SouthPowersStudy.com/project-overview](https://SouthPowersStudy.com/project-overview)

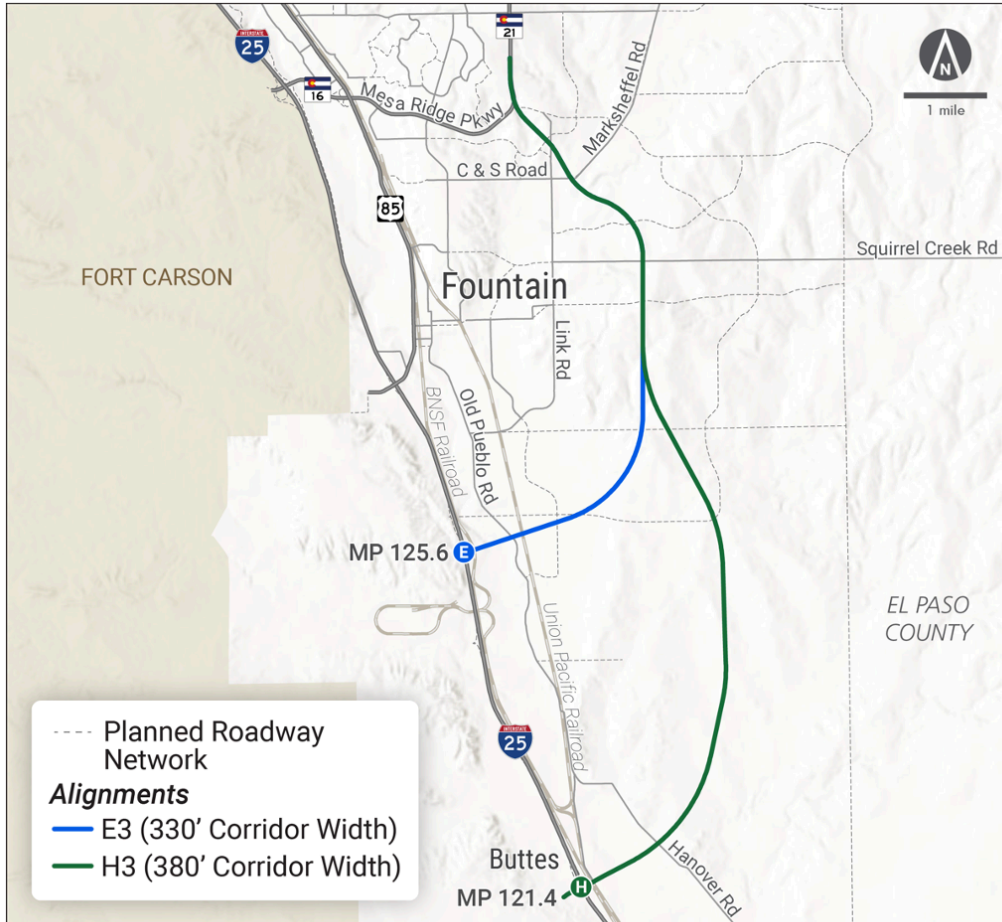
### Results of the Alternatives Analysis Process

The Study Team used the information collected from the Existing Conditions Report as well as future land use and growth information, and stakeholder input, to develop alternative alignments for the corridor. The Recommended Alternatives were identified through a multi-level, iterative process.



Agency coordination and public involvement played an important role in the Alternatives Development process. Out of the nine alternatives analyzed, the Study Team has narrowed the alignment options down to two recommended alignments; Alignments E3 and H3. These alignments were selected for

recommendation due to their ability to meet the Purpose & Need and Goals for the corridor.

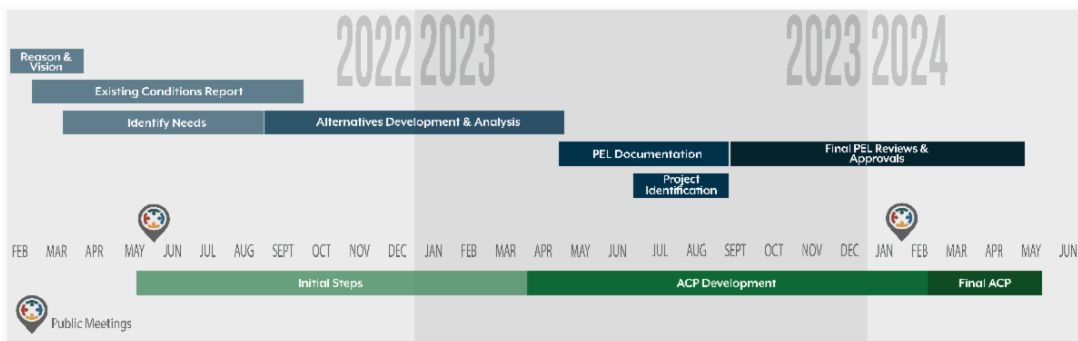


**South Powers Extension Study – Recommended alignments for Corridor Preservation**

**View and Zoom in on a more detailed Recommended Corridors**

**Map located on the website, Project Documents Tab:**

[https://www.southpowersstudy.com/files/ugd/f29967\\_0c676c7b4707404a9034476b091aacd6.pdf](https://www.southpowersstudy.com/files/ugd/f29967_0c676c7b4707404a9034476b091aacd6.pdf)



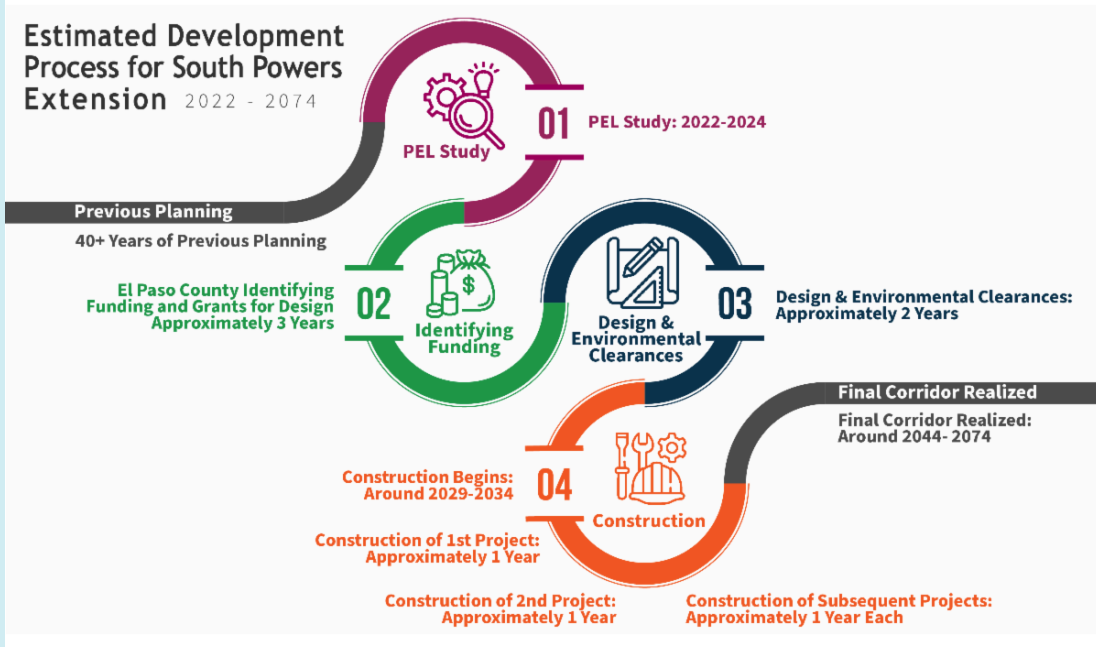
## Estimated Development Timeline for the South Powers Extension

During public engagement meetings for feedback on the S. Powers Extension Study, two questions were most commonly asked: What is the location of the alignments? When will construction begin/end?

**What is the location of the recommended alignments?** Alignments E3 and H3 have been selected as shown above, but will continue to be refined to

minimize impacts as design continues.

**When will construction begin/end?** Since no construction funding has been identified, there is no set timeline for construction. Once funding is identified, the preliminary design will progress along with necessary environmental clearances. General timelines and steps in the process have been identified in the Estimated Development Process Graphic below.



## Project Partners



**COLORADO**  
Department of Transportation



Pikes Peak Area  
Council of Governments

Communities Working Together



U.S. Department of Transportation  
Federal Highway Administration

## How can I stay Involved?

- To find out more information and review our previous newsletters, visit, <https://www.SouthPowersStudy.com>
- To be included in our enewsletter distribution, sign up by sending an email to: [SouthPowersStudy@gmail.com](mailto:SouthPowersStudy@gmail.com)

**MANTÉNGASE INFORMADO:** Para recibir boletines electrónicos del proyecto, envíe un mensaje a [SouthPowersStudy@gmail.com](mailto:SouthPowersStudy@gmail.com) y será agregado a nuestra lista de contactos.

**Note:** *If you wish to no longer receive this specific project enewsletter but want to continue receiving other project communications that you previously expressed interest in, please hit "reply" to this email and key in the message "REMOVE." Thank you.*

El Paso County, Department of Public Works | 3275 Akers Drive, COLORADO SPRINGS, CO  
80922

[Unsubscribe lisa@bachmanpr.com](#)

[Update Profile](#) | [Constant Contact Data Notice](#)

Sent by [lisa@bachmanpr.com](mailto:lisa@bachmanpr.com) powered by



Try email marketing for free today!